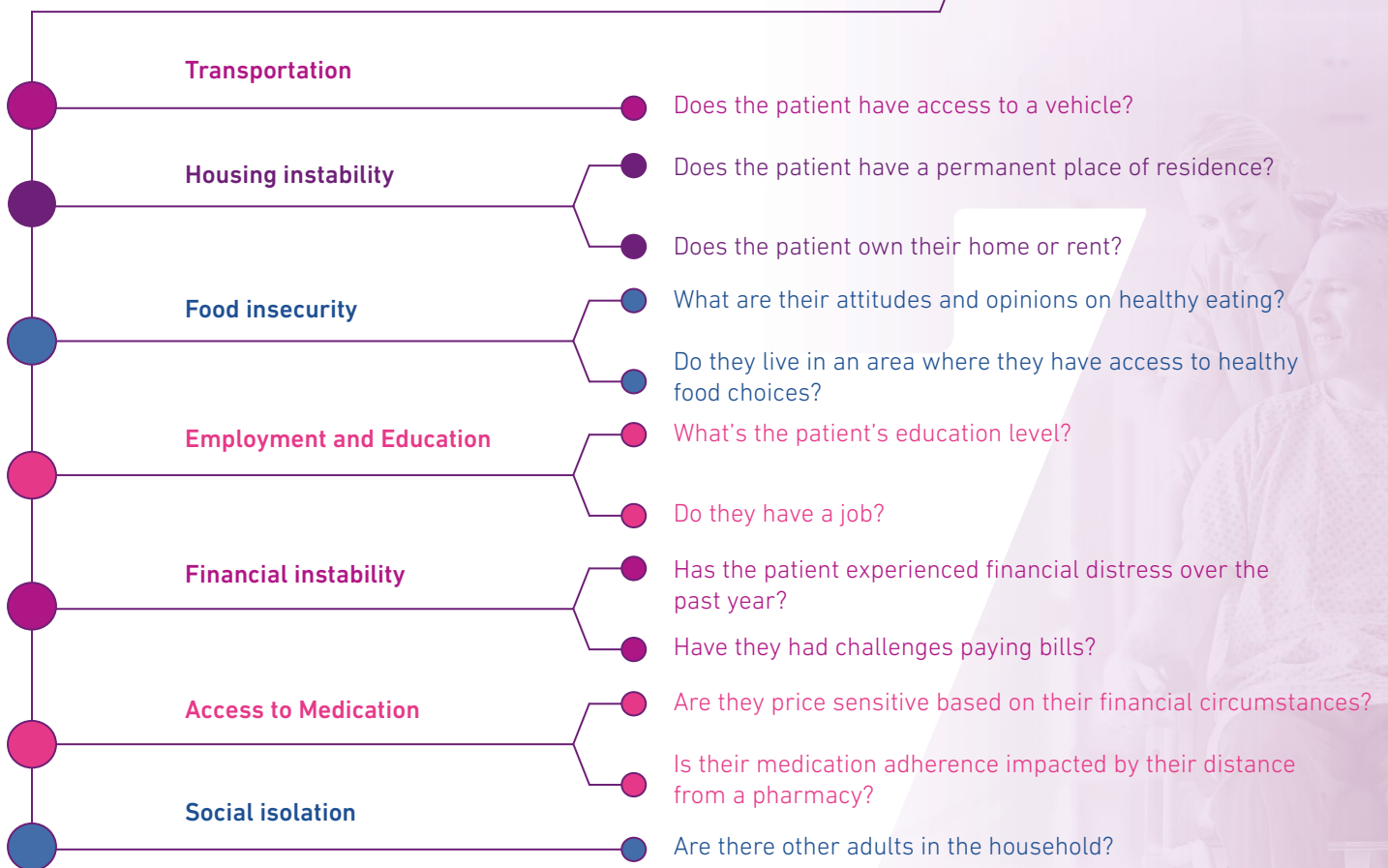


OPTIMAL WAYS TO SCREEN FOR YOUR PATIENTS' SOCIAL NEEDS

An estimated **80% of payers** believe addressing social determinants of health (SDOH) are key to improving population health, and **88% of hospitals** say they are screening for them.

Many providers have basic demographic information on their patient populations but are missing the more sophisticated insights that could help them better support patients to prioritize health. So, what should you be looking for?

Some questions to consider as you determine which SDOH matter to your patient population:



Ideally, your screening approach should let you dig into the specific challenges your members face, rather than simply flagging general issues. For example, if a patient reports housing challenges, does this mean they're affected by homelessness, unable to pay rent, live in crowded or damp accommodations, or have some other issue? Your approach will depend on this information.

With these insights, you'll be able to see your patients' most common barriers to care so you can offer a more holistic, tailored and effective support plan.

To learn more, visit www.experianhealth.com/socialdeterminants